



Bangkok Patana School

The British International School in Thailand

Established 1957

Welcome to the Primary School

Our Mission ...

“to ensure that students of all nationalities grow to their full potential as independent learners in a caring British international community”



Bangkok Patana School
The British International School in Thailand
Established 1957

The Year 6 Team



Ms. Sarah



Mr. Casey



Mr. Ferguson



Mr Jones



Ms Laura



Mr Jack



Ms. Isobel



Ms. Mel



Ms Kate



Ms Tanya



Mr Mark



Ms. Tasneem

Primary World Languages Tea



**Grace
Chen**
Mandarin
grch



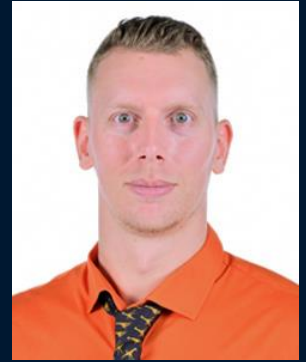
**Marine
Servino**
French
masa



**Caterine
Clavijo-Franco**
Spanish
cac1



**Mariela
Bianciotti**
Spanish
mabi



**Kees
Meinders**
Dutch
kemi

Primary Arts Team



Mr Charlie
Music
chmc



Ms Rachel
Music
rast



Ms Lisa
Music
lima



Ms Alexa
Drama
alfu



Ms Vicki
Art
viwi



Ms Nina
Art assista
arso

Thai Team



Kru Pim
PIVA



Kru Rosie
ROWA



Kru Gak
AMHE



Kru Sasi
SAKA



Kru Porn
POCA



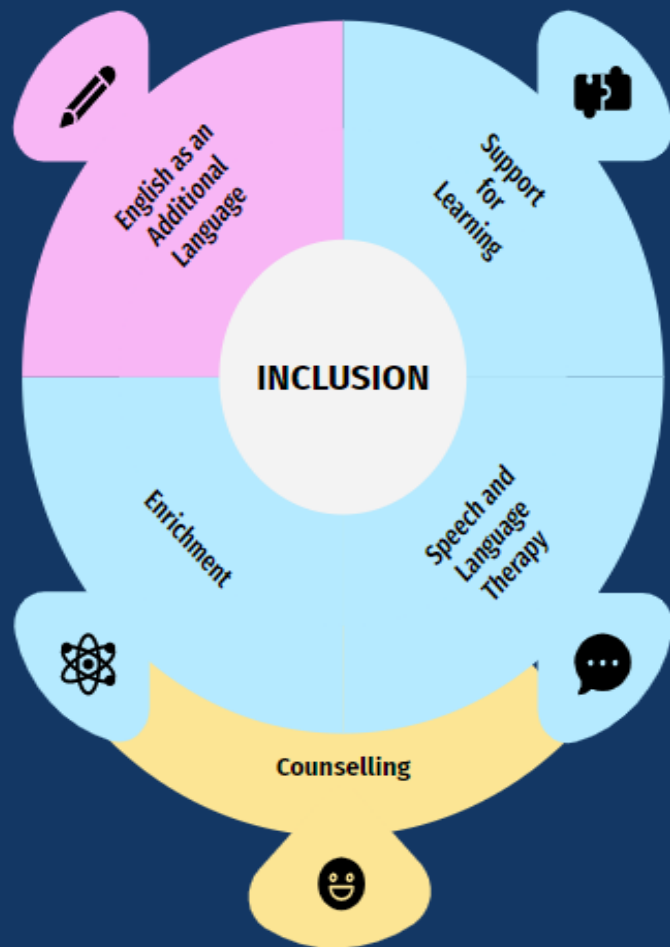
Kru
Pranee



Kru Mou
KHAS



Kru Ne
PIUK



Primary Inclusion Team:



English as an
Additional
Language (EAL)



Support for
Learning (SFL)



Speech and
Language
Therapy (SALT)

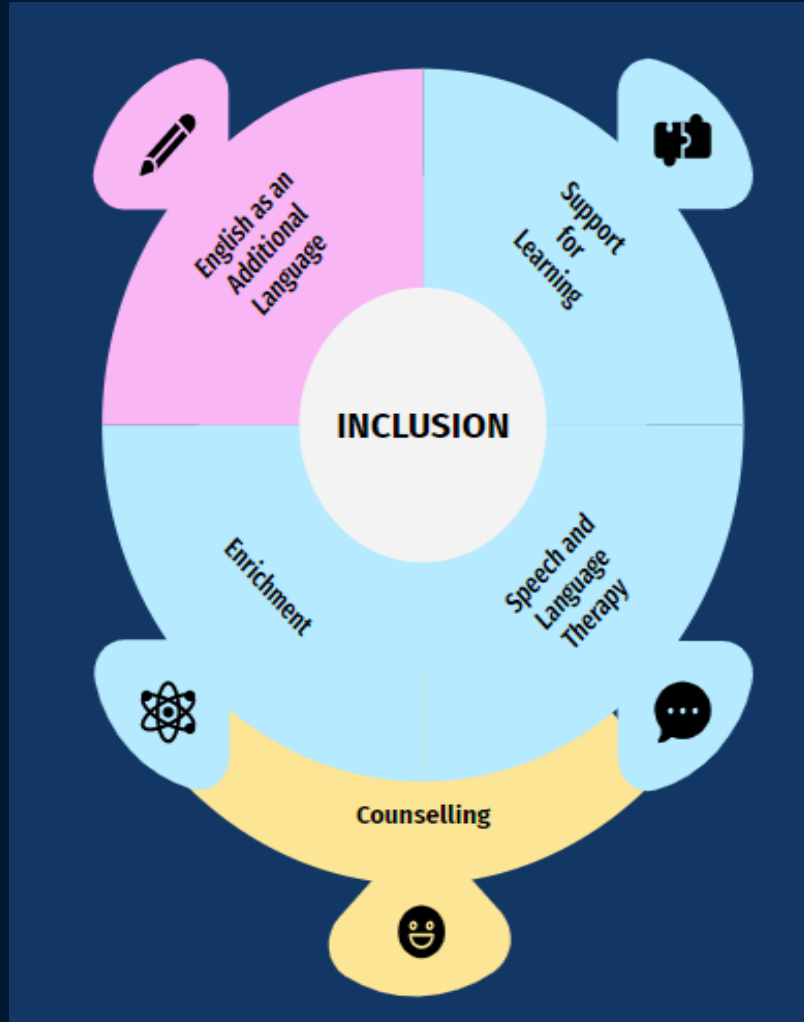


Enrichment
(ENR)



Counselling
(CNS)

Mission



Bangkok Patana's Primary Inclusion Team recognises and celebrates the uniqueness of each child and in doing so enables students to have access to the highest levels of learning and wellbeing.

As a dedicated team of experienced professionals, the Team works closely alongside class teachers to support, challenge, nurture and inspire students so that they reach their fullest potential in school life and beyond.



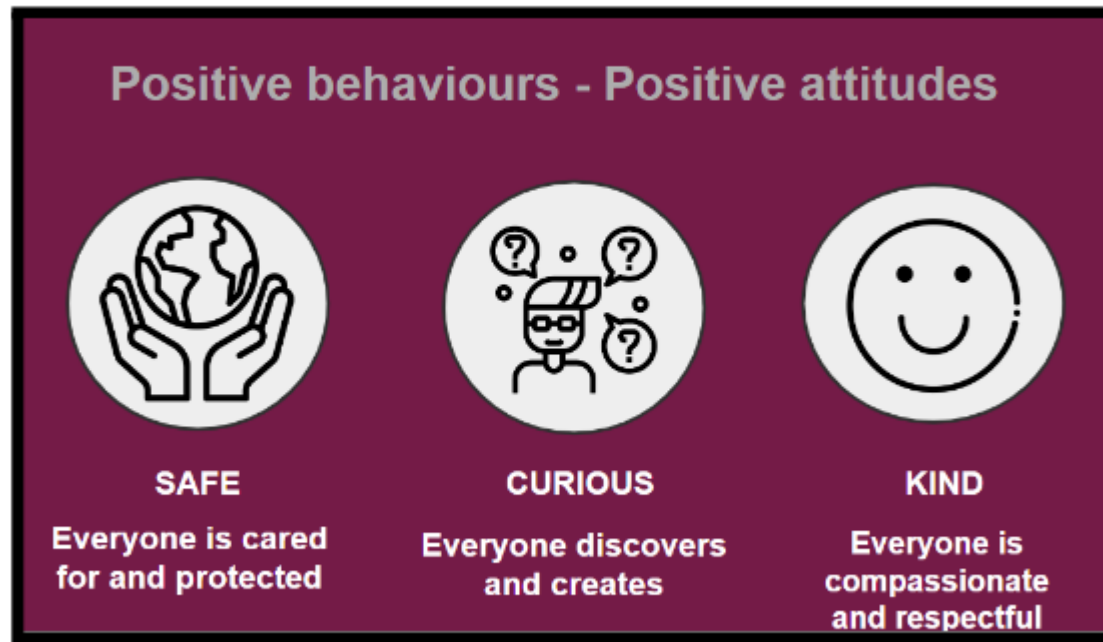
Bangkok Patana School

The British International School in Thailand

Established 1957

- Specialists (PE) - PE days bring in a full PE kit / swimming kit
- Library
- Daily - Book - laptop / Ipad with keyboard and mouse & headphones Hat -
Water Bottle

Learning in Y6 - promoted through these 3 key principles:





Bangkok Patana School
The British International School in Thailand
Established 1957

Learning in Y6

- *Establishing expectations*
- *Building positive relationships - kindness and....FUN!*
- *Thematic connected learning approach where students build an understanding of the world through developing critical thinking skills*
- *Collaborative, creative and resilient*
- *Meeting the needs of every student*
- *Flexible groupings*
- ***Well-being – Learning – Global Citizenship***

Learning in Y6

Year 6 Curriculum



Term 1a -
Heart Beat
(25/26)



Term 1b - Our
Planet (25/26)



Term 2 -
Migrations
(25/26)



Term 3 -
Interculturalism
(25/26)



Bangkok Patana School
The British International School in Thailand
Established 1957

Year 6 Residential to Chanthaburi

Week 1: 17th November

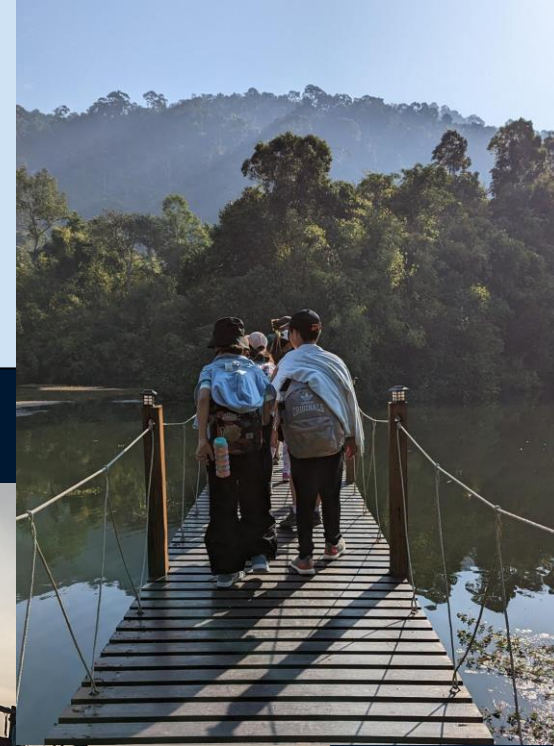
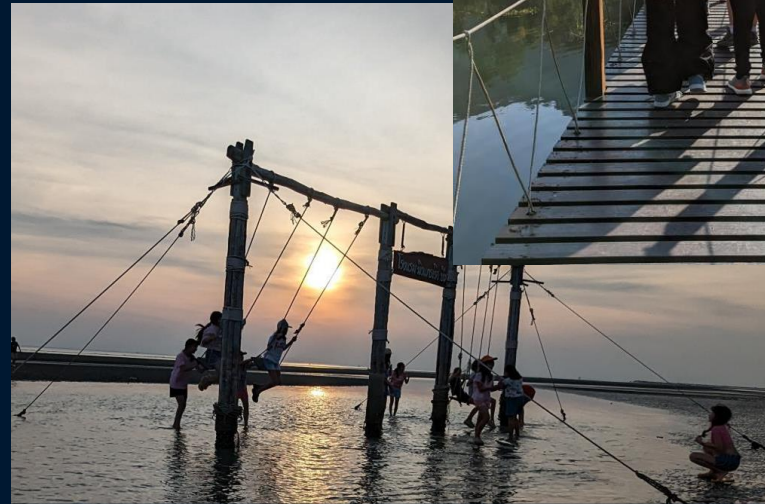
Week 2: 24th November

4 nights

Links to our Back to Nature connected
learning theme

More information to come in November.

Contact: Mr Ferguson dufe@patana.ac.th





Bangkok Patana School
The British International School in Thailand
Established 1957

HOME LEARNING AND FIREFLY

Set on a Friday - via class blog/teams
Hand in the following Wednesday

1 x Maths 30 minutes

1 x Humanities or Literacy 30 minutes

5 x 20 minutes reading a week

YEAR 6 BLOGS

- Weekly overview of in class learning including photographs
- Important messages for future learning
- home learning
- Parents can access through Parent Gateway

 Welcome to Year 6	 6B's Blog 25-26	 6C's Blog 25-26	 6D's Blog 25-26
 6F's Blog 25-26	 6J's Blog 25-26	 6M's Blog 25-26	 6N's Blog 25-26
 6S's Blog 25-26	 Year 6 Curriculum	 Year 6 Parent Communication	 Year 6 Newsletter



Bangkok Patana School

The British International School in Thailand

Established 1957

Year 6 Blogs & Communication



Year 6
Curriculum



Year 6 Parent
Communication



Year 6
Newsletter



Year 6
Community
Action Team
(CAT) Blog



Maths
Learning
Resources



Year 6
Archives



Bangkok Patana School

The British International School in Thailand

Established 1957

ALLERGIES

NO NUTS!

Students with food allergies are no longer permitted to eat any food brought in by other students or parents, such as birthday doughnuts or sweets.

If your child is listed as having a food allergy, you may wish to send in a bag of treats they can keep in my cupboard and enjoy during celebrations.

BIRTHDAYS

Brownies, cupcakes, small donuts, and cake slices are easier for your child to give out.

- We do not give out drinks (e.g., bubble tea, sodas)
- Please reduce plastic packaging.
- We do not allow party bags or other gifts to be given out at school, either for birthdays, or other celebrations.





Bangkok Patana School

The British International School in Thailand

Established 1957

Home School Partnership - developing independence

Encourage your child to do the following:

- ***Start home learning tasks on their own***
- ***Organise themselves for the next school day – pack and unpack their own bag – know what they need***
- ***Fully charge their device for the next day***
- ***Tell the time (analogue watch)***
- ***Pass any letters to you from school***

Parents Safeguarding Responsibilities

Wear your Patana tag when on campus

This means that we consider you a safe person to be on campus.

Use the right toilets

We have toilets for students and toilets for adults.

If you need to help your child, please take them to a toilet for adults.

You may not enter a student toilet or changing room.

Use good judgement when taking and posting images for children at school

We cannot be the camera police.

Some parents will not want you to take or post pictures of their child.

At some events, parents are invited to take photographs (e.g. sports days, performances).

Parents Safeguarding Responsibilities

If you see or hear something that concerns you...

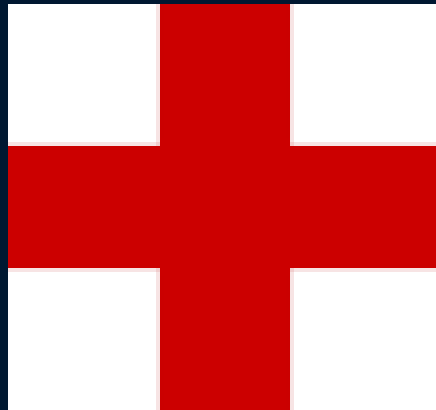
Share with the class teacher or Year Group Leader (Pastoral)

Do not try to solve the problem by talking with the children concerned.

Do not post your concerns or identify students on a Line Group or any other social media.

We take student and family confidentiality very seriously and require all parents to do the same.

**PLEASE UPDATE YOUR CHILD' S
MEDICAL RECORDS ON FIREFLY!**



Notification of Temporary Guardianship



Bangkok Patana School
The British International School in Thailand
Established 1957

643 Lamsalle Road (Sukhumvit 108)
Bangkok, Bangkok 10260
Thailand
Tel: +66 (0) 2785 2200
Fax: +66 (0) 2785 2399
Email: recognition@patana.ac.th
www.patana.ac.th

NOTIFICATION OF TEMPORARY GUARDIANSHIP

Please complete all sections of this form to appoint a temporary guardian for your child/ren whenever you are travelling away from home.

To: **Admissions Department**

	Student's Last Name	Student's First Name	Class/TG
1.			
2.			
3.			
4.			

We will be away from Bangkok from (date) _____ until (date) _____.

Temporary Guardian's Details:	
Name:	
Relationship to Student: (family member, family friend, nanny etc)	
Telephone Numbers:	
Email address:	
Address:	

Whilst we are away from home, our child/ren will stay at:

☐

Our home address

☐

Temporary guardian's home address

In case of an emergency, please contact us at:

Phone 1: _____

Phone 2: _____

Email 1: _____

Email 2: _____

School Transport Users – please contact Transport Department directly if there are any changes to your child's transport arrangements.

Parent/Legal Guardian's Signature

Print Name

Date

Bangkok Patana is a not-for-profit IB World School accredited by CIS

Complete one of these forms if both parents are going away so we know who to contact in an emergency.

You can find the link to this in our Newsletter.



PATANA

Bangkok Patana School

The British International School in Thailand

Established 1957

WELCOME TO

YEAR 6



August 2024

643 Lasalle Road (Sukhumvit 105)
Bangna, Bangkok 10260
Thailand

Tel: +66 (0) 27852200
Fax: +66 (0) 2785 2399
Email: primary@patana.ac.th
<http://www.patana.ac.th>

Please refer to your welcome booklet

Want to help in Y6?

As part of our Safeguarding and Child Protection measures, any parents who wish to become a regular volunteer can sign up for Safeguarding Training later this term. Parents will be able to support once they have completed their training.

Volunteers need to:

- Attend training with Designated Safeguarding Lead
- Sign a self-disclosure form
- Sign the Parents Safeguarding Code of Conduct.

* We do not currently ask for Police Checks from parents.



Bangkok Patana School

The British International School in Thailand

Established 1957

PARENT COMMUNICATION

Newsletter - Friday at the end of the day

- events and dates
- curriculum updates
- specialist updates
- year group general messages

Class blogs - Updated weekly

- class messages
- overview of learning
- photographs of students



Year 6
Newsletter



Year 6 Parent
Communication

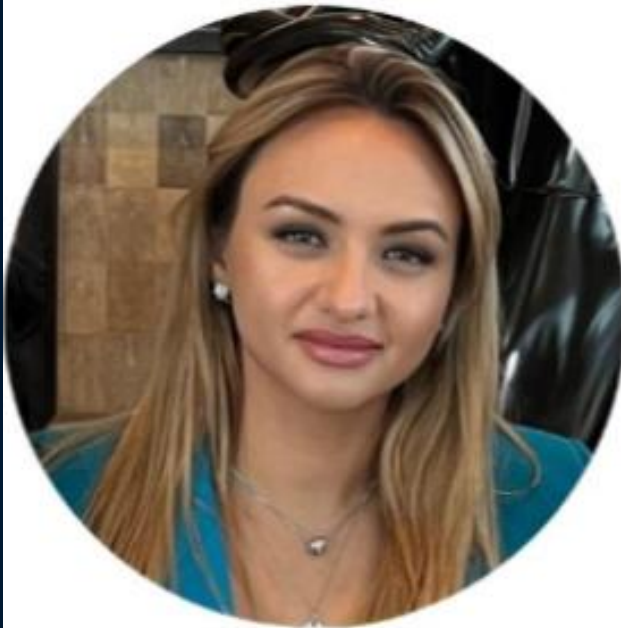


Bangkok Patana School

The British International School in Thailand

Established 1957

PTG Reps



Inna Matijasevich

Year 6

ptgy6@patana.ac.th



Bharati Lachmandas

Primary

Representative

ptgprimary@patana.ac.th



Bangkok Patana School

The British International School in Thailand

Established 1957

Contact

- ***Up to 24 hour response time for emails. No email replies at weekend.***
- ***Please keep all of your personal information up to date via the Parents' Gateway.***



Bangkok Patana School

The British International School in Thailand

Established 1957

Thank You
for
Coming !!